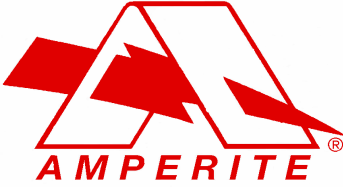


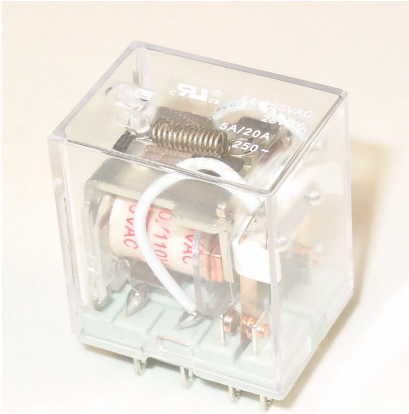
Solving your Relay requirements since 1922



Amperite Co.
 567 52nd Street
 P.O. Box 329
 West New York, NJ 07093
 (800) 752-2329
www.Amperite.com

GP2 - Series

Power Relays

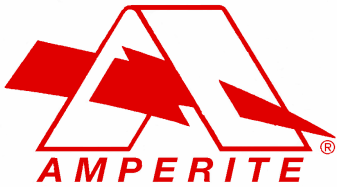


- Small Size and Light Weight**
- Low Coil Power Consumption**
- Bulk Packaging**
- Plug in Termination**
- Clear See-Thru Dust Cover**
- Contact Rating 12 Amperes**

SPECIFICATIONS

Contact Material	Silver Alloy		
Contact Resistance	Maximum 50 Milliohms		
Operate Time	Maximum 20 Milliseconds		
Release Time	Maximum 20 Milliseconds		
Insulation Resistance	100 Megohm Minimum (500 VDC)		
Voltage	—		
Coil to Contact	1500 VAC (50 / 60 Hz) for 1 Minute		
Contacts	2000 VAC (50 / 60 Hz) for 1 Minute		
Vibration Resistance	Functional	10 to 55 Hz Double Amplitude of 1.5mm	
	Destruction	10 to 55 Hz Double Amplitude of 1.5mm	
Shock Resistance	Functional	100 G's Minimum	
	Destruction	100 G's Minimum	
Life (Minimum Operations)	Mechanical	At 180 CPM	1,000,000
	Electrical	At 20 CPM	100,000
Ambient Temperature	-40° C to +55° C		
Operating Humidity	40 to 90% RH		
Unit Weight	90 Grams		

Solving your Relay requirements since 1922



Amperite Co.
567 52nd Street
P.O. Box 329
West New York, NJ 07093
(800) 752-2329
www.Amperite.com

CONTACT RATINGS

Arrangement	2C / 3 C
Resistive Load Cos. $\Phi = 1$	12A 250 VAC
Maximum Contact Voltage	110 VDC / 250 VAC
Maximum Contact Current	12A
Maximum Switched Power	336W 3000VA

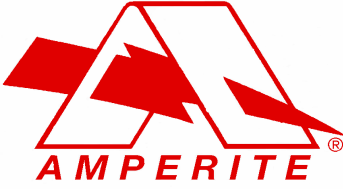
COIL DATA (at 20°C)

Nominal Voltage	12VDC	24VDC	240VAC
Pick-up Voltage VDC (Max.)	75% Max.	75% Max.	80% Max.
Drop-out Voltage VDC (Min.)	10% Min.	10% Min.	30% Min.
Coil Resistance $\pm 10\%$	120 Ω	472 Ω	9110 Ω
Power Consumption	1.2W	1.2W	2W
Max. Allowable Voltage	120% of Nominal Voltage		

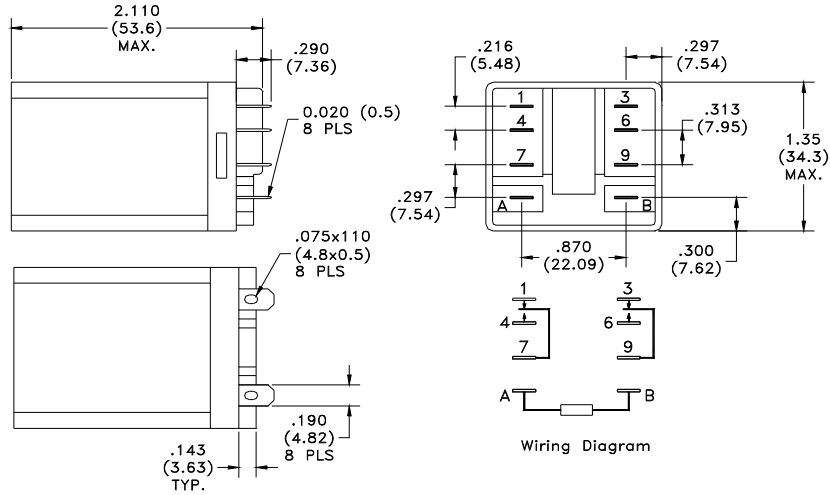
THE AMPERITE PART NUMBERING SYSTEM IS LISTED BELOW. IF YOU DO NOT SEE THE NUMBER LISTED THAT YOU NEED, PLEASE CONTACT US. WE CAN PROVIDE MOST TYPES OF RELAYS AVAILABLE TODAY.

Part Number	CONTACT ARRANGEMENT	COIL VOLTAGE	TERMINATION
GP2-2C 012D 01	2C = 2 Form C	012D = 12VDC	01 = PLUG IN
GP2-2C 024D 01	2C = 2 Form C	024D = 24VDC	01 = PLUG IN
GP2-3C 012D 01	3C = 3 Form C	012D = 12VDC	01 = PLUG IN
GP2-3C 240A 01	3C = 3 Form C	240A = 240VAC	01 = PLUG IN

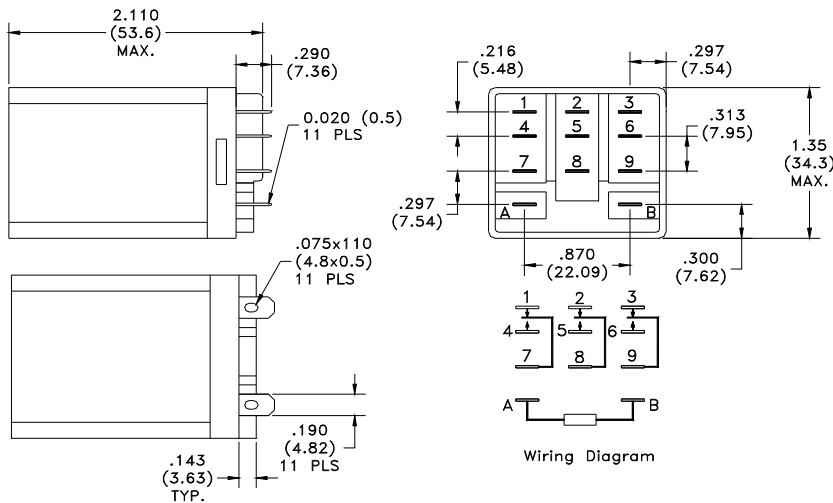
Solving your Relay requirements since 1922



Amperite Co.
 567 52nd Street
 P.O. Box 329
 West New York, NJ 07093
 (800) 752-2329
www.Amperite.com



Outline Dimensions GP-2
 2 Pole Plug-In Terminal



Outline Dimensions GP-2
 3 Pole Plug-In Terminal